



WHY GALAȚI?

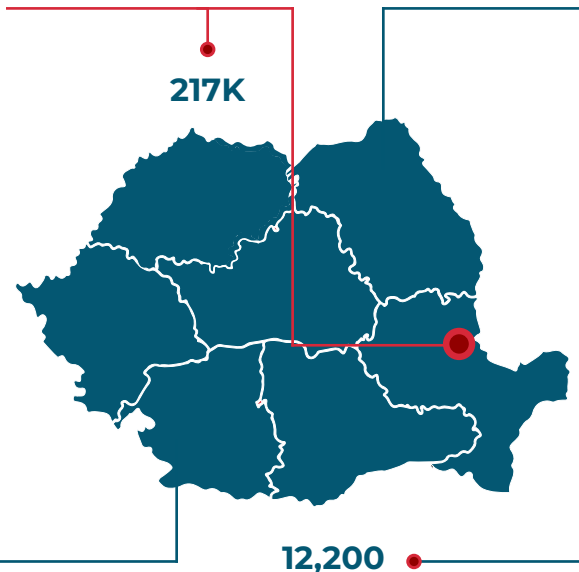
Galați offers a high quality of life with stunning Danube landscapes, rich cultural attractions, modern amenities, and affordable living costs, making it an ideal place to live and explore.

Galați: Primed for Investment



LARGE POPULATION

Its capital, Galați city, has a population of 217K, the 8th largest in Romania. Galați County had an estimated population of more than 496 K.



EUROPE'S TOP SHIPYARDS

Damen Shipyards Group, based in Galați, is one of Europe's largest builders of commercial and military vessels.



GATEWAY TO EU

Galati County, located in Eastern Romania along the widest part of the Danube River, is a gateway to both EU and non-EU markets.



SKILLED WORKFORCE

More than 12,200 full-time students are enrolled in bachelor's, master's, and doctoral programs annually, with over 2,600 degrees awarded each year.

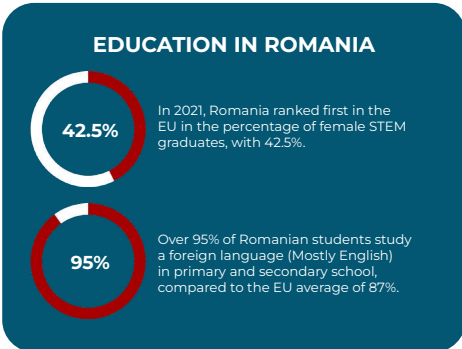


Port of Galați is Romania's largest port on the Danube River and is crucial for trade and industry. It hosts key players like Damen Group and supports Mittal Steel, the country's largest steel producer.

INFRASTRUCTURE & DEVELOPMENT PROJECTS



International Airport: The planned airport will serve passengers and cargo, supporting Ukraine's reconstruction and improving regional connectivity.



#1 IN ROMANIA

Galați, home to Liberty Steel Galați, is the largest integrated steel producer in Romania.

KEY SECTORS:

ADVANCED MANUFACTURING:

Galați excels in shipbuilding and additive manufacturing, backed by a skilled workforce and government support. The sector in Romania is set to reach €183 billion by 2028.

KNOWLEDGE-INTENSIVE BUSINESS SERVICES:

IT expertise, low labor costs, and strong university ties position Romania to grow its ICT services sector. The ICT sector contributed €45.3B to Romania's GDP in 2023.

TOURISM:

In 2023, Galați welcomed over 110K tourists. The city is well positioned for ecotourism along the Danube River, as well as for marine biology R&D and other related activities.



WHY GALAȚI?

Advanced Manufacturing

Galați has established itself as a leader in advanced manufacturing, with a particular focus on shipbuilding, specialty metals, and semiconductors. The region is home to Damen Shipyards (one of Europe's largest shipbuilders) and Liberty Steel, the #1 producer of steel in Romania.

INVESTMENT POTENTIAL

Romania offers a **supportive** regulatory environment with various incentives, including tax breaks, grants, and subsidies aimed at attracting foreign investment in advanced manufacturing sectors.



Located at the crossroads of Europe, Romania offers easy access to both Eastern and Western European markets, streamlining trade and enhancing supply chain efficiency.

6

Education Institutions: There are 6 higher education institutions in the Southeast region, which are key to advancing innovation in the manufacturing industry, particularly in electrical and mechanical engineering, chemistry, and computer science.

30 years

Education Budget Growth: The proposed education budget for 2023 in Romania was the largest in the past 30 years, marking a positive trend in increasing funding for the sector.



Industry Focus: Galați has the potential to become a hub for advanced manufacturing, with key sectors including semiconductor wafer manufacturing, shipbuilding, and specialty metal production, alongside high-tech industries such as robotics, automation, and additive manufacturing.

TARGETED MANUFACTURING INDUSTRIES

SEMICONDUCTOR MANUFACTURING



There is an opportunity for collaboration in semiconductor design and wafer production. These sectors are supported by local universities and research centers.

SPECIALTY METAL MANUFACTURING



Produces critical materials like titanium alloys and high-performance steels for aerospace, automotive, and electronics industries.

SHIPBUILDING

Galați is the largest naval shipyard on the Danube River, its output ranging from large tankers to small coast guard patrol boats.



GROWTH POTENTIAL

Industry 4.0 technologies (automation, AI, IoT development, and green manufacturing, including green hydrogen production) are being used to meet the growing demand for sustainable production.



Dr. Matt Patton

Executive Vice President
mpatton@angelouconomics.com

Andrei Buzatu

Dir. of International Business Development
abuzatu@angelouconomics.com

Brigita Mikolajunaite

Marketing Director
bmiko@angelouconomics.com

AngelouEconomics

115 Wild Basin Road, Suite 307, Austin,
TX 78746, USA
international@angelouconomics.com
+1 512-222-7602



WHY GALAȚI?

Tourism

Tourism in Galați is on the rise, with significant potential for growth in cultural, adventure, and business tourism. The region offers a unique blend of Danube River landscapes, rich cultural heritage, and affordable accommodations, making it an ideal location for both leisure and business visitors.



TARGETED TOURISM SECTORS

Galați has the potential to become a top destination for **cultural, adventure, business, and eco-tourism**, as well as **marine biology R&D**, leveraging its strategic location on the widest part of the Danube River and its rich cultural heritage.



MULTICULTURALISM AND STRATEGIC IMPORTANCE

Galați County has a **rich multicultural history**, shaped by Romanian, Slavic, Celtic, Turkic, Ukrainian, and Italian **influences**. It plays an important role in **improving** Danube river navigation and strengthening trade in the region.

WORKFORCE STATISTICS



Rich Cultural Heritage: Galați's historical landmarks, museums, and festivals offer immersive cultural experiences, attracting tourists interested in Romania's traditions, history, and architecture.



Improved Infrastructure and Accessibility: Ongoing improvements in transportation and accommodation are making Galați more accessible and convenient for travelers, enhancing its overall appeal as a tourist destination.



Better Quality of Life: The growth of tourism helps improve public services, infrastructure, and community pride, making Galați a more vibrant place to live and visit.

TARGETED TOURISM SECTORS

TOURISM SECTOR

STRENGTHS

OPPORTUNITIES

CULTURAL AND HERITAGE TOURISM

Galați has a rich cultural heritage, with landmarks like the Danube promenade and historical museums, reflecting a vibrant cultural identity.

The city can enhance immersive cultural experiences and use digital marketing to attract global visitors, highlighting its history and traditions.

ADVENTURE TOURISM

Galați's diverse natural landscapes offer opportunities for activities like hiking, trekking, and water sports. The region is ideal for adventure experiences.

By focusing on sustainable, eco-friendly tourism, Galați can attract thrill-seekers while promoting environmental awareness through local partnerships.

BUSINESS AND MICE TOURISM (MICE - MEETINGS, INCENTIVES, CONFERENCES, AND EXHIBITIONS)

Galați's strategic location in Eastern Europe makes it a prime destination for business events, offering a mix of modern venues and historic sites.

Improving infrastructure (e.g., airports, railways) and establishing partnerships with event organizers could strengthen Galați's attractiveness as a destination for international conferences and meetings.

WINE AND CULINARY TOURISM

Galați's terroir and winemaking tradition, along with its rich culinary heritage, make it ideal for wine and food tourism.

Developing wine trails, tastings, and food festivals, along with promoting sustainability, can attract eco-conscious tourists and support the local economy.



WHY GALAȚI?

Knowledge Intensive Business Services (KIBS)

The KIBS sector in Galați offers specialized services like consulting, IT, and engineering, driving innovation and solving complex business challenges. It plays a key role in advancements in fields such as advanced materials and sustainable construction.

INVESTMENT POTENTIAL

Labor costs in Galați are lower than in Western Europe. The salary of a junior software engineer is around \$1,8 K, while in some Western European countries, it might be 4 to 5 times higher.

\$1.8K

SKILLED WORKFORCE



Galați has a skilled workforce in KIBS sectors like engineering, IT, and research, supporting innovations in sustainable construction and nanomaterials.

R&D CAPABILITIES



Research institutions in Galați focus on cutting-edge technologies like self-healing materials and nanomaterials for concrete, advancing sustainable infrastructure.

INFRASTRUCTURE & SITES



Galați offers well-equipped sites ideal for developing advanced building solutions, such as smart and self-healing structures.

MARKET ACCESS



The region's location provides easy access to European and international markets, ideal for KIBS services and construction exports.

COST-EFFECTIVE BUSINESS CLIMATE



With a low average salary of \$724, Galați offers competitive operational costs and incentives for businesses in KIBS and advanced manufacturing sectors.

KIBS TARGETED SECTORS:

ADVANCED MATERIALS AND RESEARCH

NANOTECHNOLOGY FOR SUSTAINABLE INFRASTRUCTURE

Galați is leading in nanotechnology, developing high-performance, self-healing materials for longer-lasting, eco-friendly construction. Investing here provides access to a fast-growing sector in sustainable, durable infrastructure.

SMART, ENERGY-EFFICIENT BUILDINGS

Galați is at the forefront of smart building technology, using nanosensors and adaptive materials for energy-efficient, self-regulating buildings. This presents an opportunity in the fast-growing green real estate industry.

POLLUTION REMEDIATION & ECO-FRIENDLY MATERIALS

Galați is driving innovation in nanomaterials for pollution cleanup and sustainable construction. Investors can capitalize on the growing global demand for eco-friendly building solutions.

NURSE MEDICAL TRAINING

STRONG LOCAL HEALTHCARE PARTNERSHIPS

Galați has established ties with local hospitals and clinics, providing an excellent foundation for clinical placements and hands-on training, with potential for international collaborations.

HUB FOR NURSING INNOVATION

Galați can become a leader in nursing research and specialized training (e.g., critical care), integrating new technologies to improve patient care and health outcomes.

ATTRACTIVE INVESTMENT OPPORTUNITY

With a growing need for skilled nurses, Galați offers investment potential in a nurse training center, supporting economic growth and addressing local healthcare needs.